

## Monthly release notices

[January >](#)[February >](#)[March >](#)[April >](#)[May >](#)[June >](#)

## What is there for you?

**Libraries and courses provide you a brand new way to access product knowledge and contents :**

- Leaflets, product introduction and proposals, guides, trainings, videos, assessments, tutorials
- Convenient browsing anytime anywhere with PC, tablets and smartphones
- Downloadable contents

**Sales enablement and Engineering tools support :**


- learn how LATS and engineering tools work
- learn how to handle CRM and sales tools
- Use our benchmark tools

**Get your HVAC certification :**


- know more about the certification tests : date, application procedure, grade objectives
- access the essential learning materials for each test category
- train on actual test questions and blank tests

**EU Online Academy is for LG employees only.**

For external use, each local Academy has now an online version. Please refer to your local Academy managers.

 Find your local Online Academy ▾[Österreich](#)[Benelux](#)[България](#)[Česká republika](#)

# HVAC Engineering Certification



The image shows a progress bar for the HVAC L3 Certification training course. The progress bar is a horizontal line with a white fill, indicating 34% completion. To the left of the progress bar is a blue square icon containing a white checkmark inside a circular seal. To the right of the progress bar, the text '34% COMPLETE' is displayed in white, followed by a white line segment. Below the progress bar is a white button with the text 'Continue' in black.

**COURSE**

HVAC L3 Certification training course

34% COMPLETE

Continue

- Application period from 2nd June until 8th July
- Test day : 16th July
- Check out L3 guide and train in our dedicated course

# Heating



## COURSE

### Cascade controller

75% COMPLETE

Continue

- Final product introduction
- Training quizz : are you ready for cascade?



## LIBRARY

### Therma V R290 Monobloc

86% COMPLETE

Continue

- New 2025 catalogues

## VRF



LIBRARY  
Multi V i R32

47% COMPLETE

Continue

- R32 refrigerant leak sensor – HR Box – Installation guide v1.2



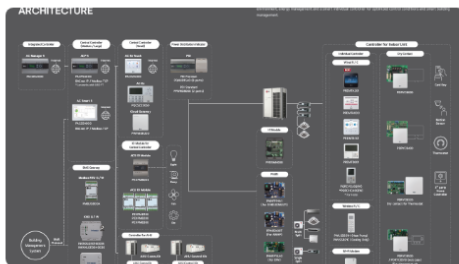
LIBRARY  
Air Handling Units

90% COMPLETE

Continue

- Application note : AHU Comm. Kit – Supply Air Temp. Controller

## Controls



LIBRARY  
Control Solutions

34% COMPLETE

Continue

- Deluxe Lite and Deluxe Wi-Fi Introductions
- Guidance for retrofit control solution v1.1
- AC Smart 5 / ACP 5 – Error CH242

## Regulations



**GUIDANCE**


**Regulations**

50% COMPLETE

Continue

- Overview of Fgas regulation and its impact

## ESG



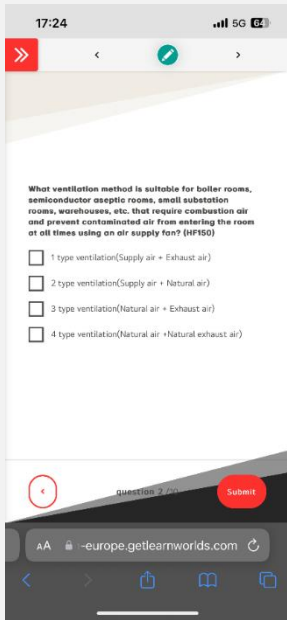
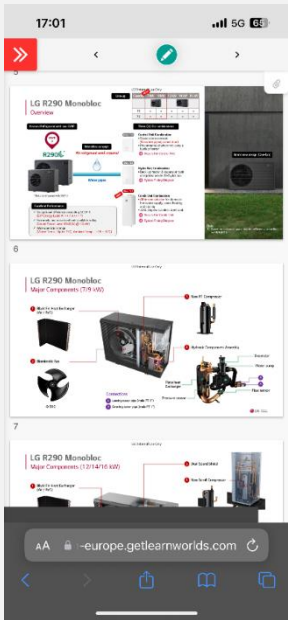
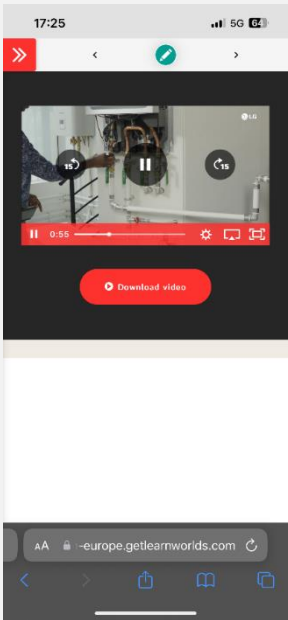
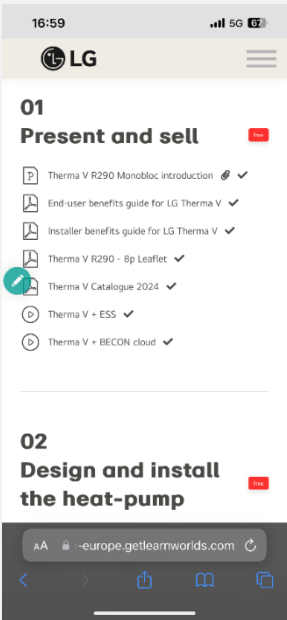
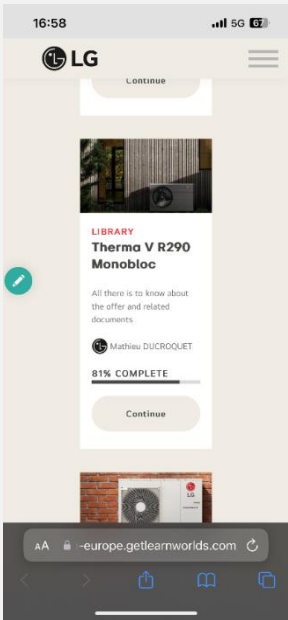
**Environmental and Social Governance at LG**

50% COMPLETE

Continue

- 2025 asset on ESG at LG

# Anytime Anywhere : also on Tablets and Smartphones



Scan to join!

