

Applying a Perpetrator Pattern-Based Approach in Family Court Cases

David Mandel
Executive Director & Founder



Mission

To create, nurture and sustain a global network of domestic violence-informed child welfare professionals, communities and systems.

Safe & Together Institute

Global Leader, Local Partner

- Live in-person & remote training
- Elearning: academy.safeandtogetherinstitute.com
- Free webinars
- Regular conferences in UK, North America, and Asia Pacific Regions
- Podcast: *Partnered with A Survivor*
- A wide variety of free and subscription-based tools, including Perpetrator Pattern Mapping Tool Choose to Change, Ally Guide, Uncovering Coercive Control Toolkit (coming soon)
- Organisational assessments and systems change consulting
- Research and evaluation
- Trainer Certification & Partner Agency Program
 - Over 70 Partner Agencies & 280 Certified Trainers worldwide
 - 167,000 hours of CORE training since 2019
 - In 2021, our Certified Trainers reached 4,670 professionals.



Where is Safe & Together?



USA

Alaska
California
Colorado
Delaware
District of
Columbia
Florida
Iowa
Maryland
Michigan
Minnesota
Ohio

Oregon
Nebraska
New Jersey
New Mexico
New York
North Carolina
South Carolina
Tennessee
Texas
Vermont
Virginia

Canada

Manitoba
Ontario
Maritimes

Where is Safe & Together?

UK

Barnardos Scotland
20+ Local Authorities across Scotland
Ministry of Defence
Manchester & other cities
10+ London Boroughs
Scottish Women's Aid

Where is Safe & Together?

Australia & New Zealand

Family Court of Australia
PATRICIA, Invisible Practices,
STACY projects
Queensland
Western Australia
Northern Territory
Victoria
South Australia
New South Wales
Australia Capital Territory

Asia

Hong Kong
Singapore
Japan

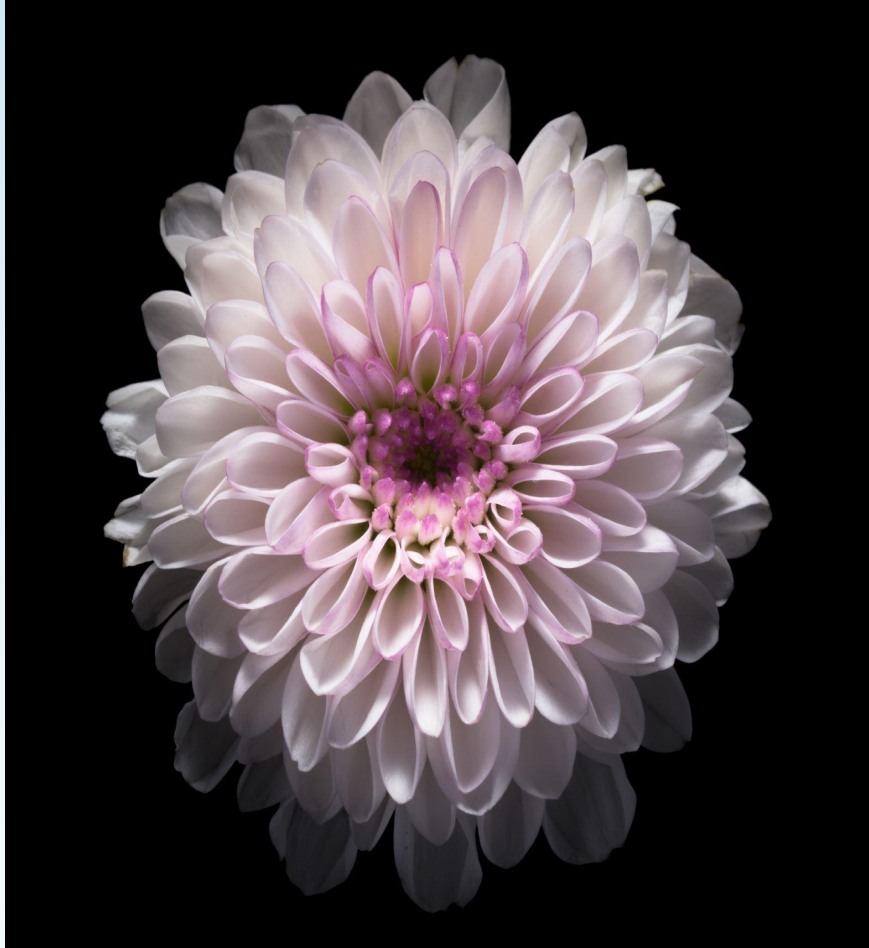


Master Class Topics

- Overview of work with FCC/FCOA
- Objective & Neutral
- Risk v. Harm
- Post Separation Coercive Control/Targeting & Grooming of Professionals
- Contextualizing Protective Parenting
- Increasing Accountability for Perpetrators as Parents

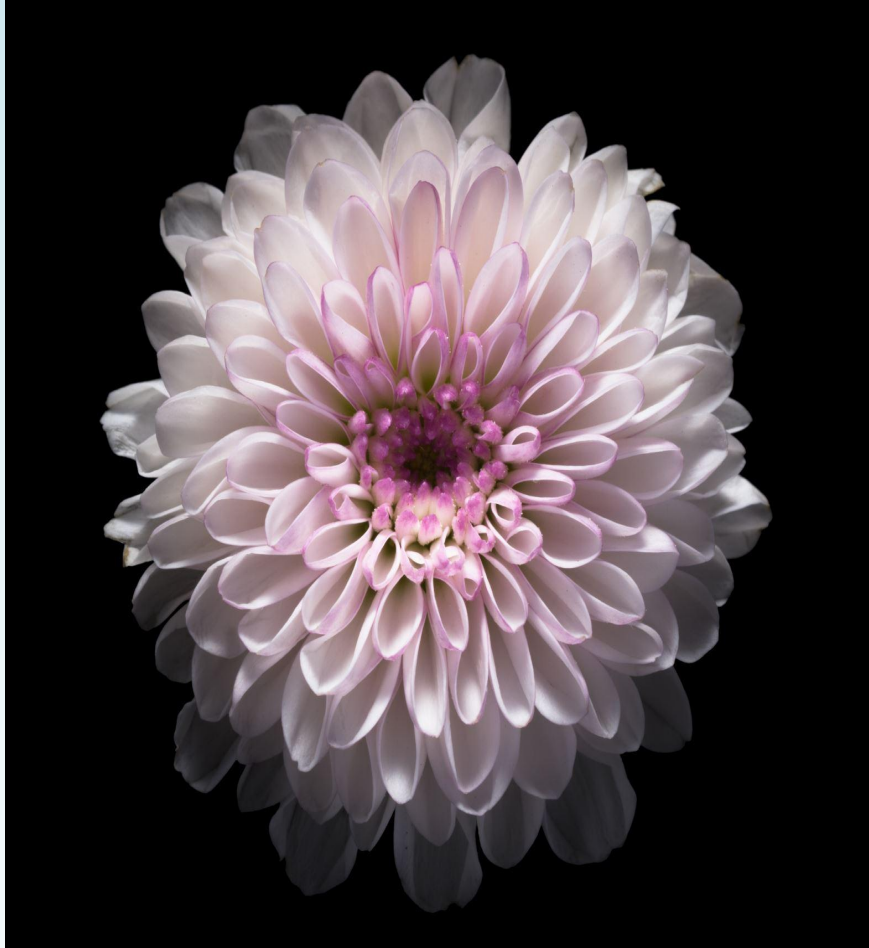
Family Court of Australia

- Training for Judges (3 hours)
- Training for Registrars (6 hours)
- Family Consultants (12 hours)
- Coaching for Frontline and Senior Family Consultants, and Registrars
- Development of new screening and assessment tools
- Advising on domestic violence and ADR processes



Safe & Together: A neutral & objective assessment framework

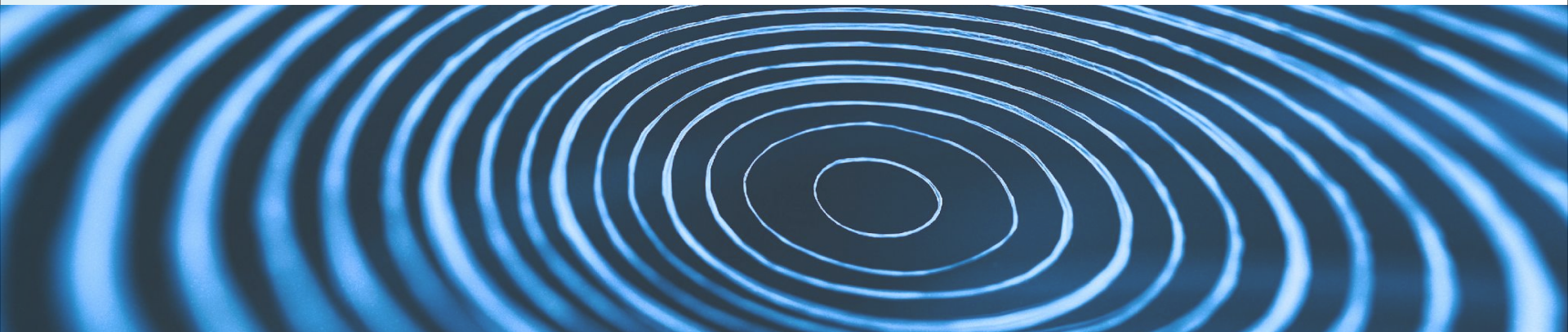
- Behavioural
- Comprehensive pattern-based lens
- No prejudgement based on gender or sexual orientation
- Emphasis on post-separation coercive control
- Clear linkages between adult behaviour and harm to children
- Strong emphasis on assessment of protective behaviours
- Accountability for perpetrators using collaborative parenting framework



Objective processes
lead to decisions in the
best interest of child
safety & wellbeing

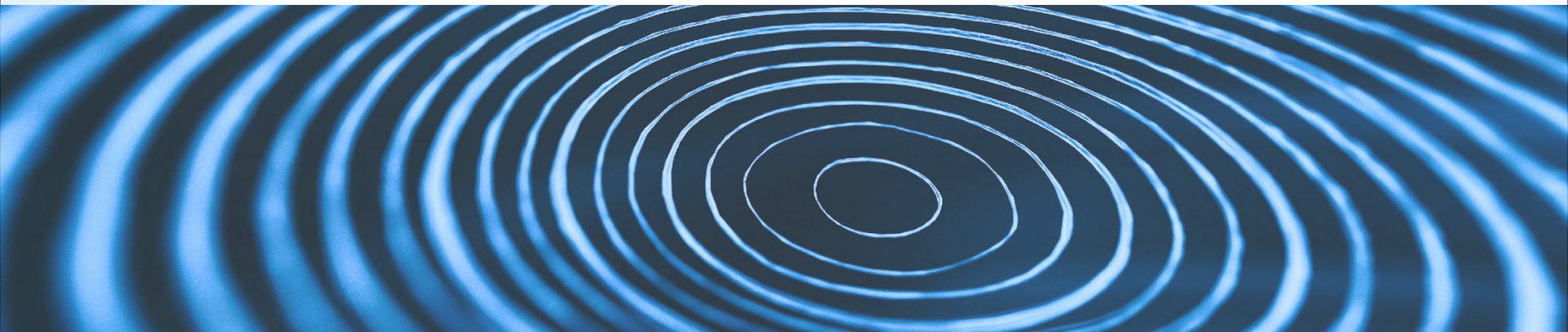
Objective v. Neutral

Objective behavioral assessments that use the lens of coercive control & actions taken to harm the children to develop evidence that identifies a protective parent and a parent who has created harm, is a positive outcome for courts that are committed to child safety.



Sorting Cross Allegations

Apply a perpetrator pattern-based assessment lens to each parent independently

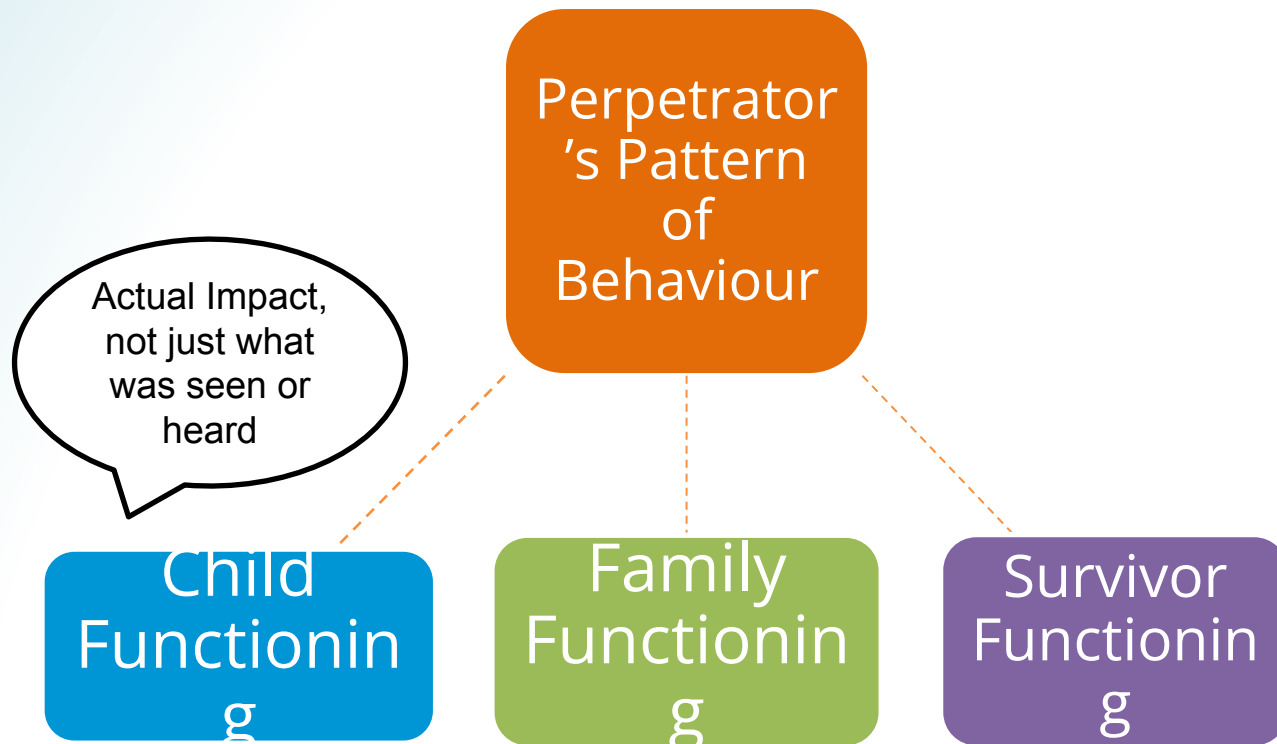


Risk Framework

What They Don't Do Well

- Consider other forms of risk beyond lethality, re-assault, rearrest like risk of losing children or other survivor worries
- Doesn't help identify harm
- Decontextualizes risk factors related to survivors
- Ignores continuing effects of coercion
- Doesn't factor in systems failures-doesn't assess systems' responses to perpetrators and survivors
- Doesn't include survivors' strengths/protective factors

Making the Connection



Multiple Pathways to Harm

Perpetrator's Pattern

- Coercive control toward adult survivor
- Actions taken to harm children

Children's Trauma & Safety

- Victim of physical abuse
- Seeing, hearing or learning about the violence

Effects on Family Ecology

- Loss of income
- Housing instability
- Loss of contact with extended family
- Educational and social disruptions

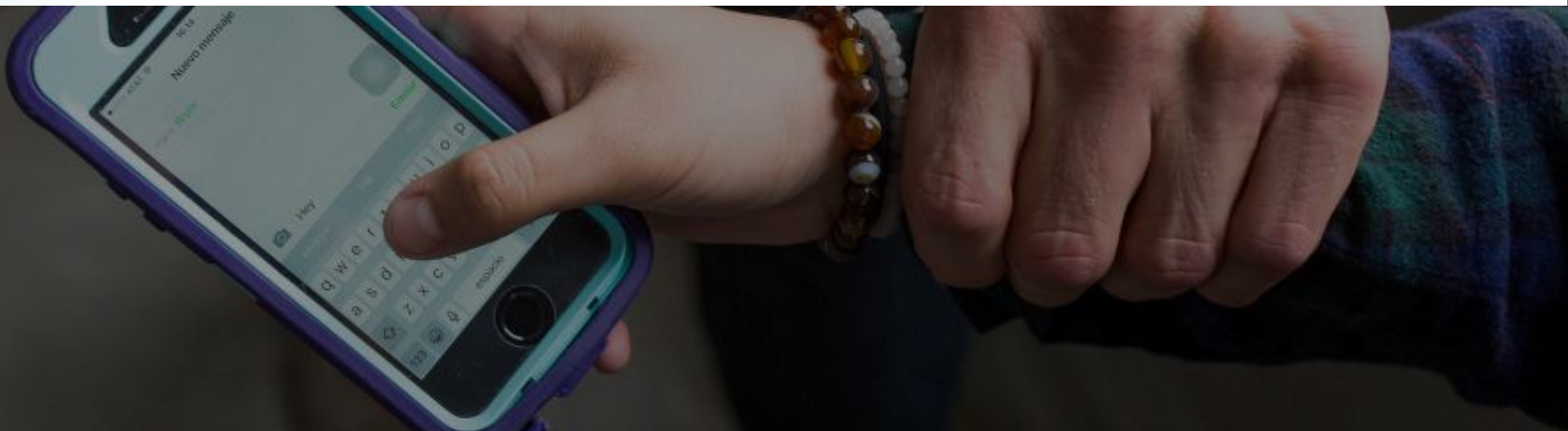
Effect on Partner's Parenting

- Depression, PTSD, anxiety, substance abuse
- Loss of authority
- Energy goes to addressing perpetrator instead of children
- Interference with day-to-day routine and basic care

Harm to Child

- Behavioural, Emotional, Social, Educational
- Developmental
- Physical Injury

Coercive Control is Rarely “Historic”





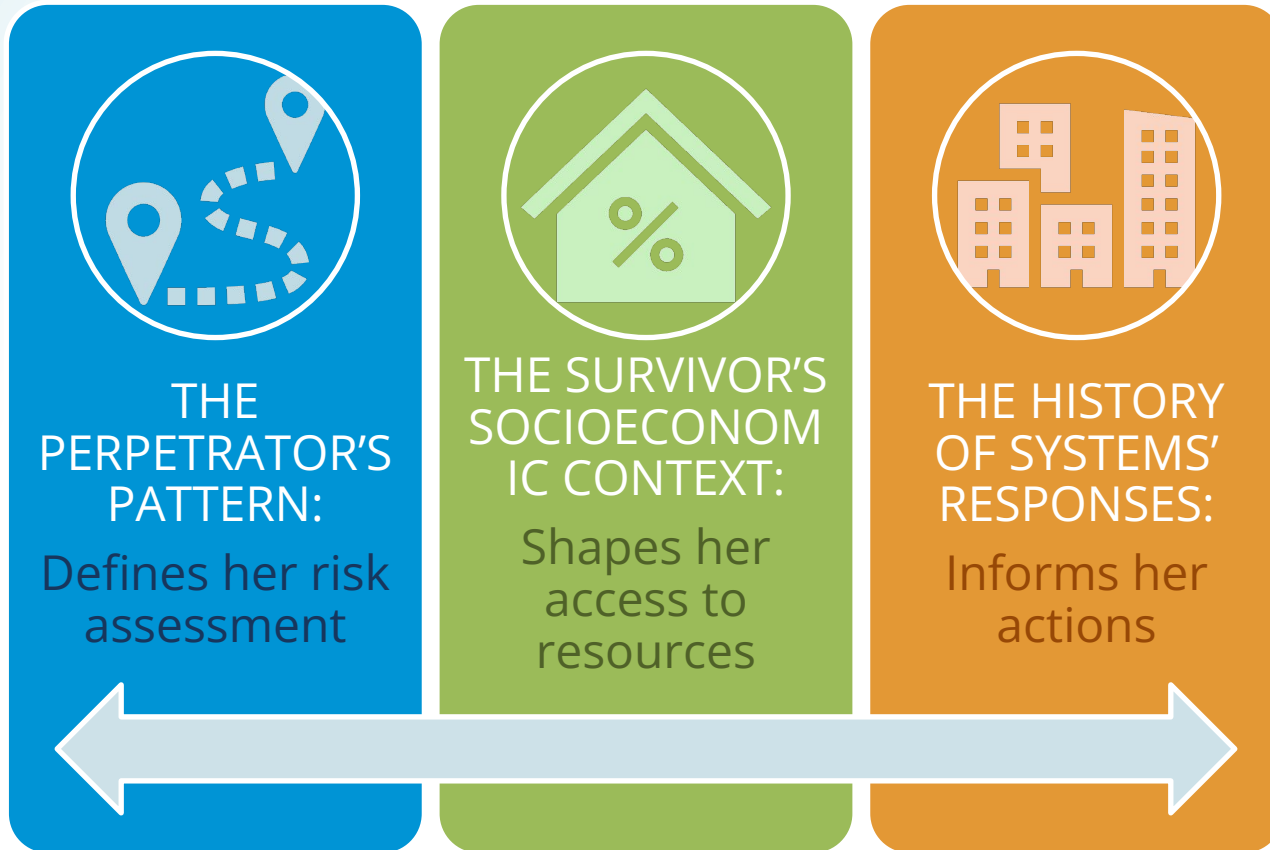
Perpetrators
target & groom
professionals -
through
bullying,
manipulation,
gaslighting, and
charm.



Assume domestic violence survivors are engaging in behaviours of resistance and protection – even after separation.

Accurate Assessments

An accurate assessment of a survivor's protective efforts requires an understanding of:



One Way to Assess Protective Efforts



- **Safety: Physical & Emotional Examples**

- Managing household to reduce children's exposure to abuse
- Sending children away (other room, other house, relatives, after-school activities)
- Verbally or physically intervening to protect children
- Getting order of protection



- **Healing from Trauma Examples**

- Talking to children
- Bringing to counseling
- Providing normalcy/routine/enjoyable activities
- Engaging relatives in lives of children



- **Stability and Nurturance Examples**

- Making sure household continues to function
- Maintaining children's basic needs
- Informing children about any changes in household
- Parenting in a "foxhole"

Another Way to Think about Protective Efforts

- What strategies did the protective parent use in the past to manage safety risks to themselves and to the children?
- What strategies did the protective parent use to help child heal from harm/compensate for abuse?
- How is the protective parent planning/acting to mitigate future risk and harm to themselves and the children?

Collaborative Post Separation Parenting

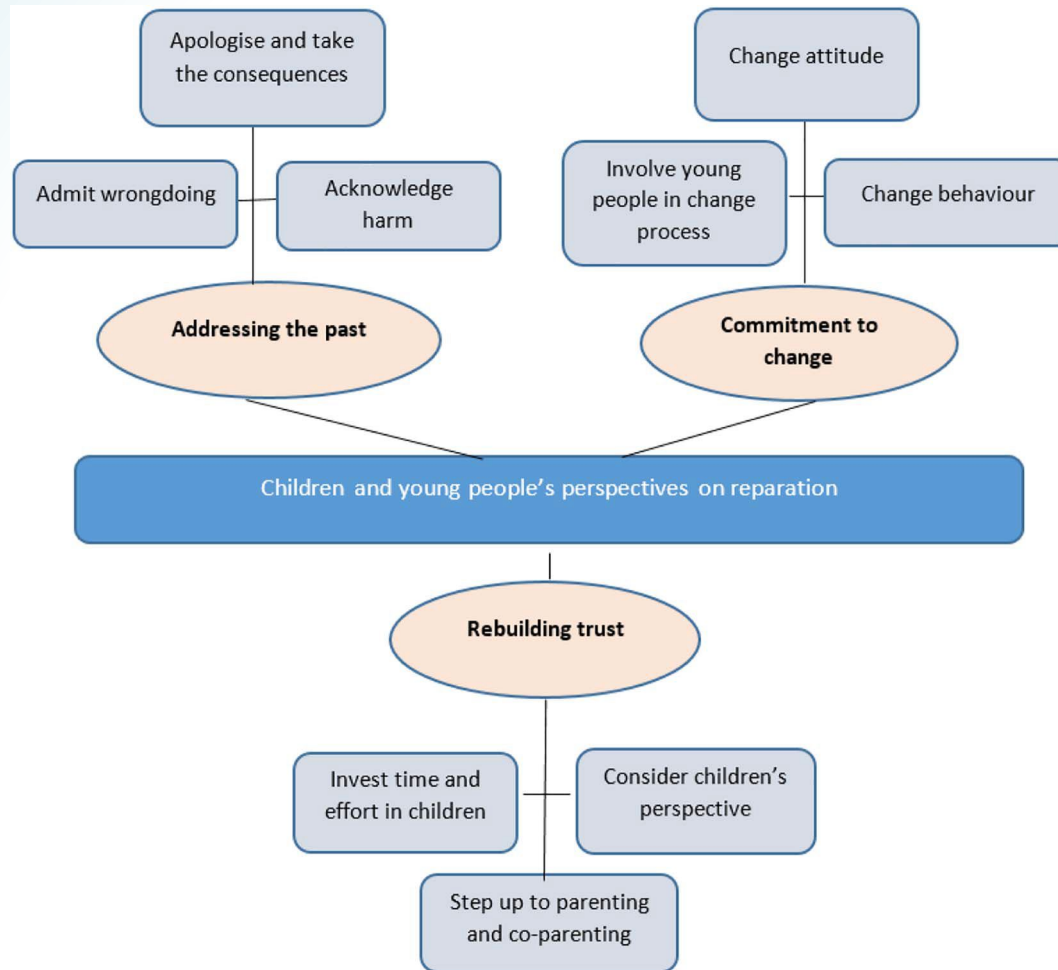
Key underlying concepts

- The parents should try to work together as co-parents
- The parents should try to avoid exposing the children to ongoing conflict and repeat litigation
- The children benefit from healthy and safe relationships with both parents and with extended family
- A willful campaign to undermine the other parent and/or turn the child against them is not in the child's best interest.



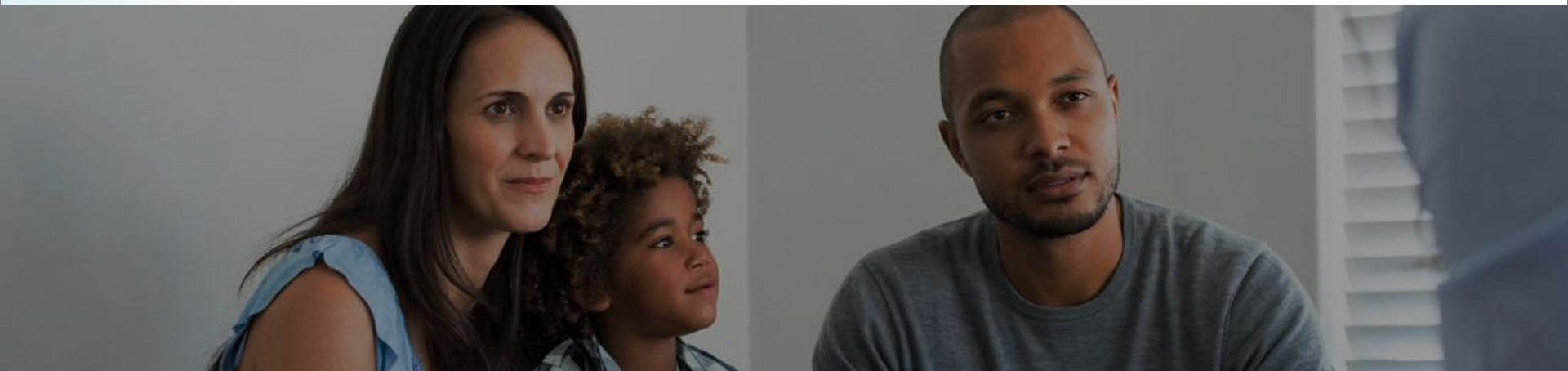
Listening to Voices of Child Survivors

“Your Behavior Has Consequences” research: Lamb, Humphreys, Hegarty (2018)



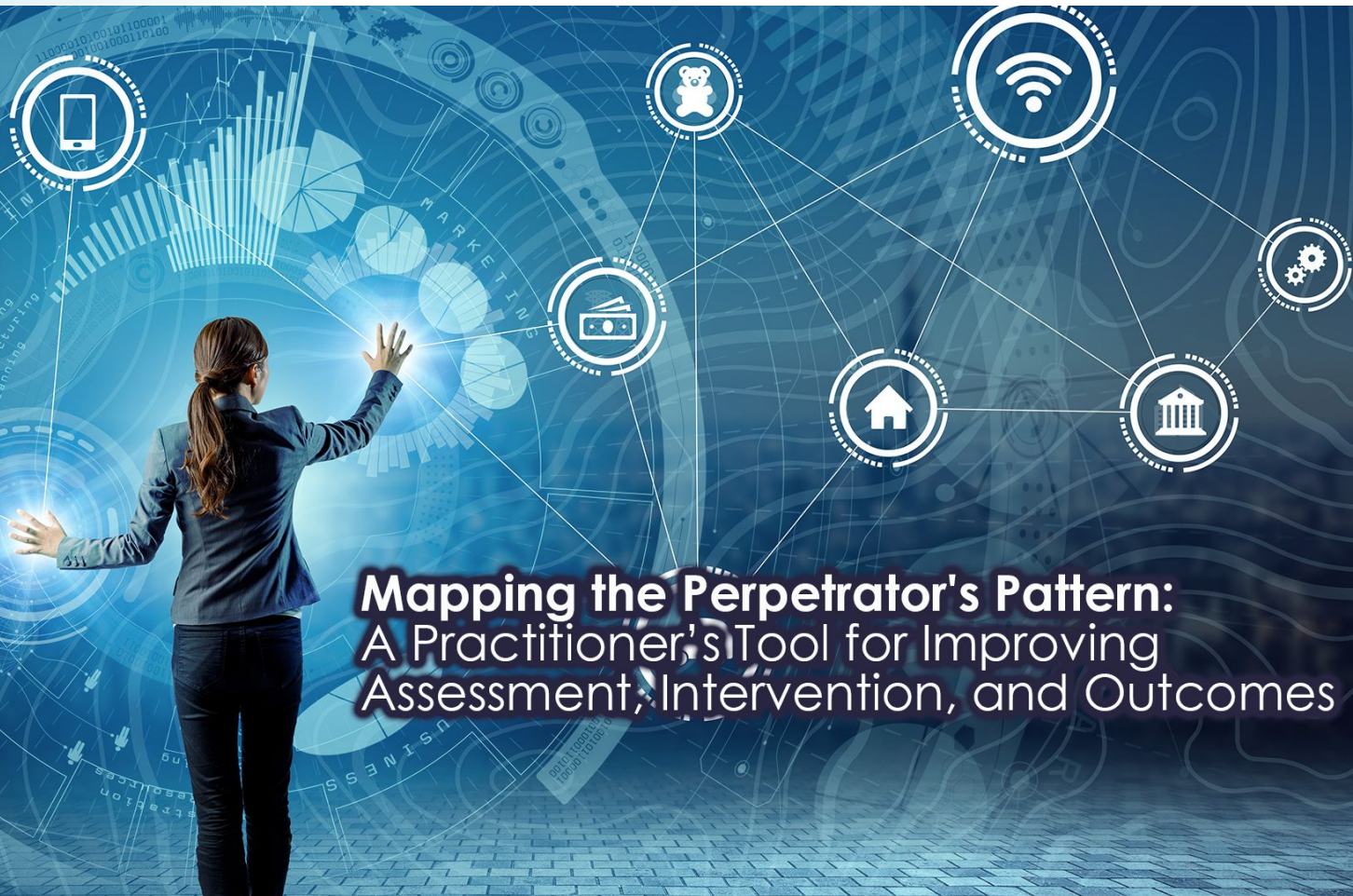
Assessing Collaborative Parenting in the Context of Coercive Control

- Acknowledgement of past (and current) coercive behaviors
- Demonstration of understanding of harm caused by behaviors
- Change in behavior patterns
- Steps to rebuild trust and repair damage
- Working with the other parents around the needs of the children





SAFE & TOGETHER
INSTITUTE



Mapping the Perpetrator's Pattern: A Practitioner's Tool for Improving Assessment, Intervention, and Outcomes

Uncovering Coercive Control:

A multi-media tool
for professionals
partnering with
survivors



COMING SOON!

Extend Your Learning:

Virtual Academy Course Catalog

The Safe & Together Institute's Virtual Academy delivers innovative and high-quality e-courses and virtual and blended trainings for child welfare, domestic violence, human services, and other professionals.



Recommended Course:
Virtual CORE

Recommended Resource:
Perpetrator Pattern Mapping Tool



Listen on
Apple Podcasts



And on other
podcast
platforms...

SAFE & TOGETHER™ MODEL

2023 EUROPEAN CONFERENCE

Changing Systems Globally

MAY 10-12, 2023

HILTON LONDON KENSINGTON

LONDON, ENGLAND



Concrete strategies.
Meaningful tools.
Real change.



860-319-0966 (USA) | safeandtogetherinstitute.com
academy.safeandtogetherinstitute.com



@SafeandTogether
@davidgmandel